

Engine	Weichai WP4G95E21
Gross Power	70 kW (95 hp) @ 2,200 rpm
Net Power	68 kW (92.5 hp) @ 2,200 rpm
Maximum Speed	36 km/h
Standard Loader Bucket Capacity Standard	1 m ³
Backhoe Bucket Capacity	0.20 m ³
Operating Weight	8,400 kg

777A

BACKHOE LOADER

 **LIUGONG**



TOUGH WORLD. TOUGH EQUIPMENT.

777A SPECIFICATIONS >>>

ENGINE	
Emission Regulation	Tier 2 / Stage II
Make	Weichai
Model	WP4G95E221
Gross Power	70 kW (95 hp) @ 2,200 rpm
Net Power	68 kW (92.5 hp) @ 2,200 rpm
Peak Torque	383 N · m @ 1,500 rpm
Displacement	4.5 L

ELECTRICAL SYSTEM	
System Voltage	12 V
Battery Rating	95 amp - hr

DRIVE TRAIN	
Number of Drive Wheels	2 wd / 4 wd
1st Maximum Speed, fwd/rev	5.9 km/h
2nd Maximum Speed, fwd/rev	10.7 km/h
3rd Maximum Speed, fwd/rev	20.5 km/h
4th Maximum Speed, fwd/rev	36 km/h
Turning Radius Outside of Front Tire	4,225 mm
Turning Radius Outside of Bucket	5,554 mm

BRAKES	
Service Brake Type	wet disc
Service Brake Actuation	Hydraulic service

TIRES	
Front Tire Size	14 - 17.5NHS - 14RPTLL - 2B
Rear Tire Size	19.5 L - 24 14PR TL R - 4

HYDRAULIC SYSTEM	
Circuit Type	open
Total Flow	143 L/min
Main Relief Pressure	24 MPa
Pump Type	tandem gear pump
Steering Type	priority valve

OPERATING WEIGHTS	
Operating Weight	8,400 kg

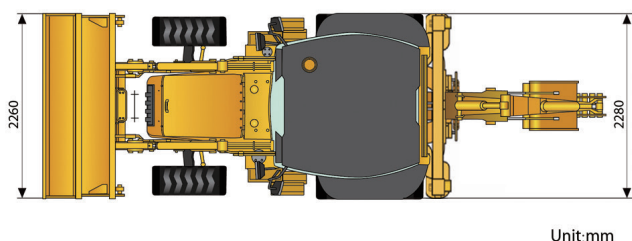
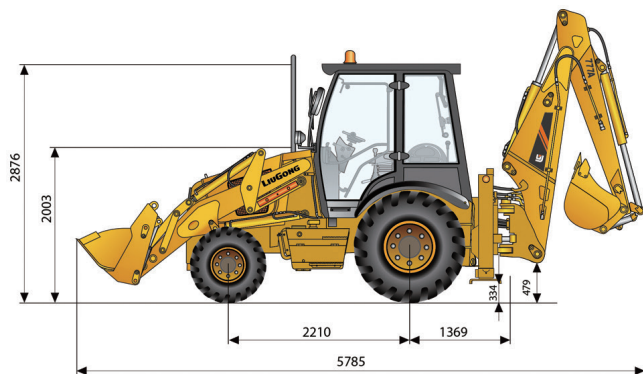
LOADER PERFORMANCE	
Standard Bucket Type (referenced)	general bucket 1 m ³
Standard Bucket Heaped Capacity ISO (referenced)	1 m ³

Standard Bucket Width (referenced)	2,260 mm
Lift Capacity at Full Height	33.2 kN
Bucket Breakout Force	59.6 kN
Maximum Dump Angle at Full Height	45°
Dump Height at Maximum Angle	2,691 mm
Dump Reach at Full Height Discharge	713 mm
Boom Lift Capacity, end, at ground	47.3 kN
Maximum Dig Depth	89 mm

BACKHOE PERFORMANCE	
Standard Bucket Type (referenced)	general bucket 0.20 m ³
Standard Bucket Heaped Capacity ISO (referenced)	0.20 m ³
Standard Bucket Width (referenced)	762 mm
Maximum Dig Depth	4,440 mm
Reach From Swing Pivot at Ground	5,433mm
Turning Angle of Bucket	182°
Bucket Digging Force	58.2 kN
Dipper Digging Force, standard stick	37.5 kN
Loading Height	3,680 mm
Loading Reach from Swing Pivot	3,007 mm

SERVICE CAPACITIES	
Fuel Tank	130 L
Engine Oil	13 L
Cooling System	15 L
Hydraulic Reservoir	130 L
Hydraulic System Total	170 L
Transmission and Torque Converter	16 L
Axle, front	6.9 L
Axle, rear	17.5 L

STANDARD EQUIPMENT	OPTIONAL EQUIPMENT
Weichai WP4G95E221 Engine	Enclosed Cab, ROPS / FOPS, with AC
Carraro Transmission	Rotary Beacon
Open Cab, ROPS / FOPS	Hydraulic shear
Auxiliary Hydraulic Kit	Vibratory Tamper
Carraro 4 x 2 Axles	Hydraulic Hammer
Boom Interlock	Carraro 4 x 4 Axles
General load Bucket 1 m ³	4 in 1 Load Bucket 1.0 m ³
Seat belt	Telescopic Boom



Unit:mm

Guangxi Liugong Machinery Co., Ltd.

No. 1 Liutai Road, Liuzhou, Guangxi 545007, PR China
 T: +86 772 3886124 E: overseas@liugong.com
 www.liugong.com

05/2014 Designed by Liugong

Specifications and designs are subject to change without notice. Machines shown may include optional equipment.